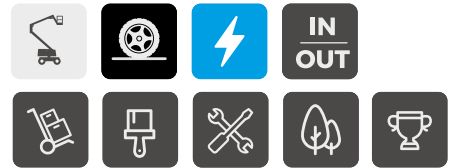


## SIGMA 16 SIGMA 16 PRO



### BOOST YOUR PRODUCTIVITY

- > Best working envelope in the market with the longest outreach and highest up & over clearance
- > Simultaneous movements
- > Versatility indoor & outdoor on firm ground
- > Load capacity of 230 kg & two operators

### MOVE WITH AGILITY

- > Jib with horizontal rotation provides access to the most inaccessible places (PRO model)
- > Zero tailswing and tight turning radius
- > Proportional, precise & smooth movements

### RELIABLE SERVICEABILITY

- > Haulotte Activ'Energy Management takes care of your battery
- > Haulotte Activ'Screen: on-board configuration & diagnostic interface

### WORK SAFELY

- > Haulotte Activ'Shield Bar \*
- > Haulotte Activ'Lighting System \*

\* Optional on SIGMA 16 model



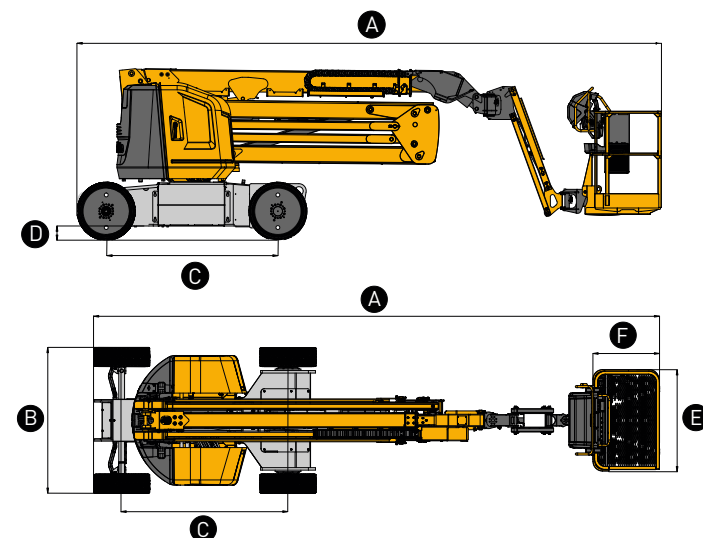
# SIGMA 16

## SIGMA 16 PRO

### ELECTRIC ARTICULATING BOOMS

#### TECHNICAL DATA

	SIGMA 16	SIGMA 16 PRO
Working height	16.1 m	15.7 m
Platform height	14.1 m	13.7 m
Horizontal outreach	8.35 m	8.05 m
Up and over clearance	7.4 m	
Lift capacity	230 kg (2 pers.)	
<b>A</b> Length	6.6 m	6.65 m
<b>B</b> Width	1.75 m	
<b>C</b> Wheelbase	2 m	
<b>D</b> Ground clearance	17 cm	
<b>E</b> x <b>F</b> Platform size	1.2 x 0.8 m	
Height - stowed	2 m	
<b>A</b> Storage / transport length	6.6 m	6.65 m
Tailswing	0 cm	
Vertical jib rotation	-65° / +65°	
Horizontal jib rotation	N/A	-55° / +55°
Platform rotation	-85° / +85°	
Turntable rotation	355 °	
Tilt	4°/4°	
Proportional drive speed	5 km/h	
Maximum wind speed rating	45 km/h	
Gradeability	25 %	
Turning radius - outside	3.9 m	
Tyres - non marking	676 x 231 mm	
Weight	6 900 kg	6 950 kg
Batteries	8 x 6 V - 435 Ah (C20)	



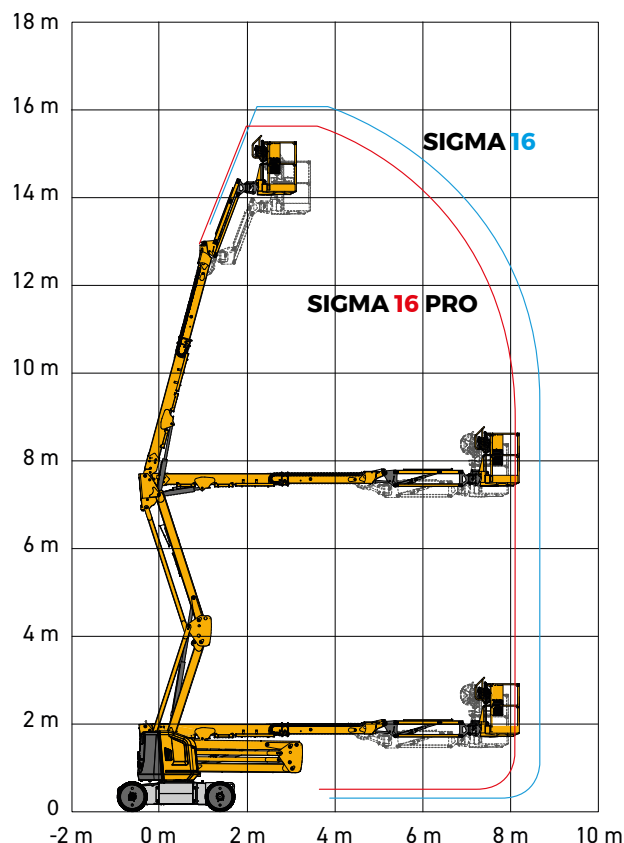
#### STANDARD EQUIPMENT

- > Jib with horizontal rotation (PRO model)
- > 2 wheel drive / 2 wheel steer
- > AC motors
- > 48V battery pack
- > Haulotte Activ'Energy Management: smart battery management system
- > Haulotte Activ'Shield Bar 2.0\*
- > Haulotte Activ'Lighting System for safe loading in low visibility conditions\*
- > Haulotte Activ'Screen: embedded diagnostic system, with color screen
- > Upper control box cover\*
- > Tool tray\*
- > 1.2 m wide basket
- > Drop bar entry
- > Large solid, non-marking industrial tires
- > AC power to basket
- > Lockable battery circuit breaker
- > Motion alarm

#### OPTIONS AND ACCESSORIES

- > Side swing door + front drop bar
- > 1.5 m basket
- > Cones holder
- > Fluorescent tube holder
- > Basket plug (110 / 230 V)
- > Cold countries hydraulic oil
- > Haulotte Activ'Energy Management: manual or automatic battery water-filling system
- > USB plug
- > Telematics solutions

\* Optional on SIGMA 16 model







### Best lifting performance

- High lifting capacity
- High maximum reach capacity

### Best precision and user comfort

- Full hydrostatic transmission for more comfort and productivity
- Best lateral visibility
- Dangerous movements cut out switch

### Compact and strong

- 5 m length
- Tilt corrector as standard



Placing height : 10 m



Maximum lift capacity :  
2990 kg



# HTL 3010



## TELEHANDLER

# Haulotte GROUP

Placing height : 10 m

Maximum lift capacity : 2990 kg



### PERFORMANCES

Maximum lift capacity	2990 kg
Lift capacity to full height	2000 kg
Lift capacity at full reach	500 kg
Maximum fork height	10 m
Reach at maximum fork height	2.2 m
Maximum forward reach	7.2 m



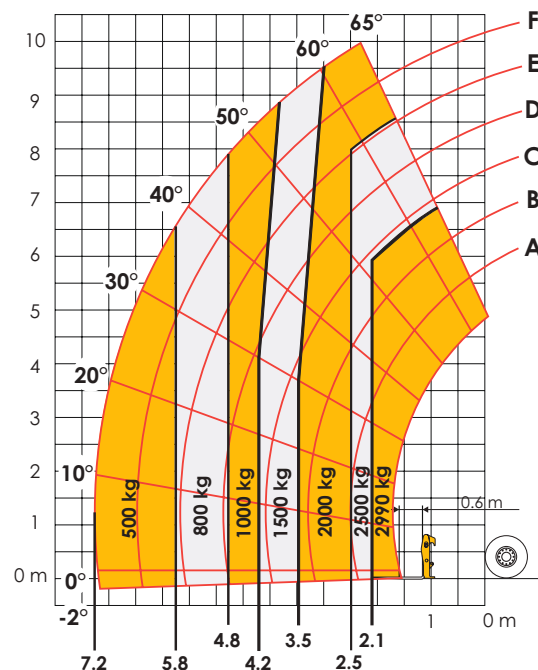
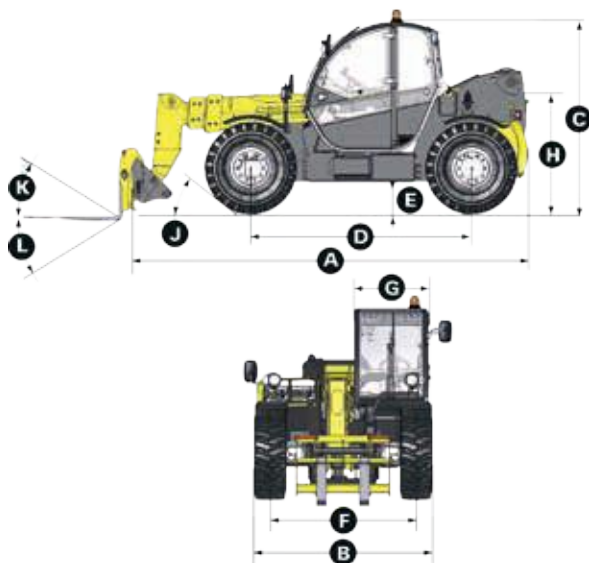
### DIMENSIONS

<b>A</b> Length	4.96 m
<b>B</b> Width	2.26 m
<b>C</b> Height	2.42 m
<b>D</b> Wheelbase	2.78 m
<b>E</b> Ground clearance	42 cm
<b>F</b> Track width	1.88 m
<b>G</b> Cab width	0.96 m
<b>H</b> Height to high boom pivot	1.6 m
<b>J</b> Approach angle	30 °
<b>K</b> Upper rotation of forks	18 °
<b>L</b> Lower rotation of forks	104 °
Turning radius (outside wheels)	3.7 m
Weight with forks	8570 kg
Tyres type	405/70 - 24



### ENGINE

Engine model	Perkins 1104
Engine Capacity	4400 cm3
Engine power output	70 kW / 95 CV
Engine torque	392
Transmission type	Hydrostatic
Fuel tank	120 l
hydraulic oil tank	103 l



### STANDARD EQUIPMENT

- Heavy duty Hydrostatic transmission with variable capacity pump and engine
- 4 wheel drive and steer
- Fuel filter with water separator
- Gear equipment pump
- Simultaneous and proportional controls of all 4 movements of the boom with flow sharing
- Safety valves on hydraulic jacks
- Auxilliary hydraulic ports
- Overload/dangerous movements cut out switch
- Tilt corrector: +/- 10 °
- ROPS/FOPS cabin with heating and ventilation

### OPTIONS AND ACCESSORIES

- Cold Weather Package
- Biodegradable oil
- Cold environment oil
- Hot environment oil
- Air conditioning
- Working lights
- 4-in-1 bucket and standards
- Jib attachment and winch
- Electrically hydraulic controls







# HT28 RTJ 0 HT28 RTJ PRO

## Performance & Productivity

- Best horizontal outreach of 23.85m
- Homogenous and fluid working envelope
- Outstanding RT capacities

## Safety & Comfort

- Safe loading/unloading in conditions with low visibility thanks to the Activ'Lighting System (PRO model)
- Unmatched comfort & smoothness in elevation thanks to a unique regulation system of boom movements
- Excellent rigid boom

## Cost efficiency

- Haulotte Activ'Screen on board diagnostic system
- Haulotte Stop Emission System which automatically turns off & on the engine
- Easy access to all components
- Modular basket quick and easy to repair



# HT28 RTJ O / RTJ PRO

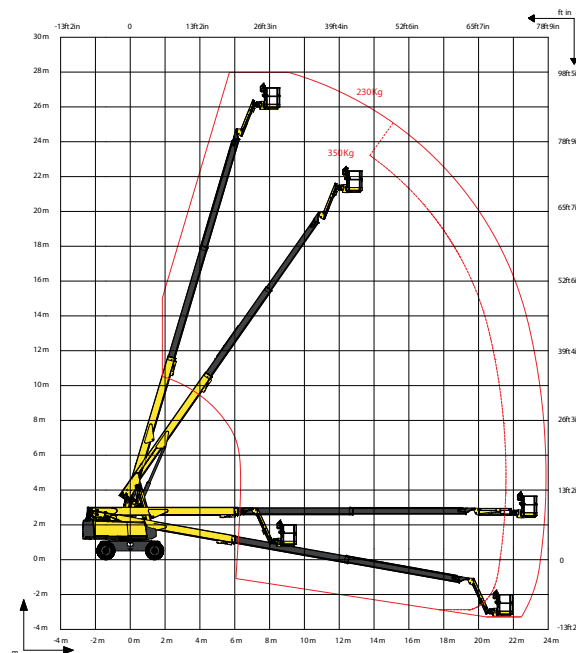
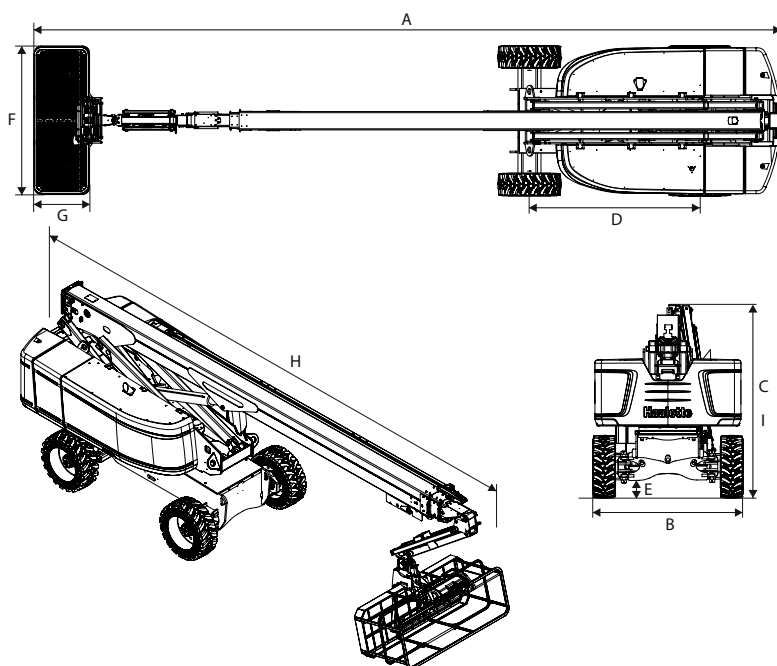
ROUGH TERRAIN TELESCOPIC BOOMS

## TECHNICAL DATA

### HT28 RTJ O 4WD-2WS

### HT28 RTJ PRO 4WD-4WS

Working height	27.9 m
Platform height	25.9 m
Horizontal outreach	23.85 m
Below ground reach	3 m
Lift capacity	230 kg (2 persons)
<b>F x G</b> Platform size	2.44 x 0.91
<b>A</b> Length - stowed	13.05 m
<b>H</b> Length - storage	9.8 m
<b>B</b> Width	2.48 m
<b>C</b> Height - stowed	2.85 m
<b>I</b> Height - storage	2.98 m
Vertical jib rotation	133° (-66°/+67°)
Jib length	1.83 m
Boom rotation angle	84.5° (+74.5°/-10°)
Turntable rotation	360° continuous
Tailswing	150 cm
<b>D</b> Wheelbase	2.8 m
<b>E</b> Ground clearance	48 cm
Tilt	4 °
Drive speed	0.5 - 5 km/h
Gradeability	45 %
Turning radius - outside	6,55 m 4.35 m
Tires - foam-filled	Solid RT cured on 1025x365 mm
Engine	Kubota Tier 3 - 49,3kW & Kubota Tier 4f - 53 kW
Weight	17 900 kg 18 100 kg



## STANDARD EQUIPMENT

- Haulotte Activ'Lighting Safe Load System (Only for PRO, Ready for the O model)
- Haulotte Stop Emission System
- Haulotte smooth proportional movements
- Haulotte Activ'Screen
- Haulotte Activ'Shield™ Bar 2.0 (Only PRO model. Standard for Europe & Latin America)
- 4 wheel drive / 2 wheel steer (O) , 4 wheel steer (PRO)
- Automatic differential wheel lock
- Oscillating axle
- Large modular basket 2.44 x 0.91 m
- Drop bar entry gate
- Lift capacity 230 kg
- Basket rotation 180° (+90°-90°)
- Upper control box protection cover and tool tray in ultra-solid composite
- Sound and light alarm for tilt and load
- Driving sound and rotating beacon light alarms
- Safe to use in winds up to 45 km/h
- Swing out engine tray for ease maintenance
- Universal telematics plug

## OPTIONS AND ACCESSORIES

- Dual load capacity 230-350 kg (2 persons)
- Haulotte Activ'Shield™ Bar 2.0 (O model)
- Lateral swing door entry gate
- Power to platform (Female plug 230V/110V)
- Hydraulic generator 3.5 kW or 6.5 kW
- Air line to platform 13 mm inner diameter
- Glazier pack
- Pipe cradle pack
- Activ'Lighting system Safe Load (O model)
- USB plug
- Motion flashing warning light
- Cold weather kit / Artic weather kit
- Hydraulic oil cooler
- Non-marking tires
- Battery circuit breaker
- White diesel
- Anti-overspeed kit (Spark arrestor, Electric one-way valve)
- Shipyard package
- Modular triangular tool tray



## OPTIMUM 8



### BEST DRIVING AND LIFTING EXPERIENCE

- > AC powered
- > High precision driving
- > Proportional and quick movements
- > Best turning radius

### UTMOST VERSATILITY

- > Ability to go through standard doorways
- > Mobile potholes protection
- > Indoor - outdoor rated

### MINIMAL MAINTENANCE AND DOWNTIME

- > Maintenance free AC motors
- > 2 easy access swing-out trays
- > Haulotte Activ'Screen (onboard diagnostic)
- > Smart transportability

### LONGER LIFE TIME

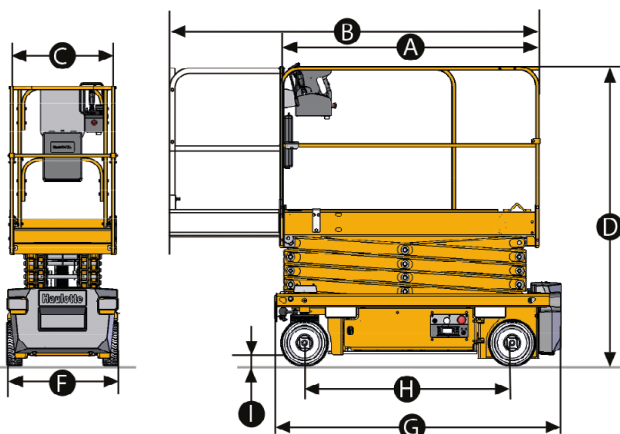
- > Haulotte Activ'Energy Management takes care of your batteries
- > Extreme robustness
- > Optimized total cost of ownership



## ELECTRIC SCISSOR LIFTS

### TECHNICAL DATA

	OPTIMUM 8
Working height	7.77 m
Platform height	5.77 m
Max. drive working height	5.77 m
Lift capacity - inside	230 kg (2 pers.)
Lift capacity - outside	230 kg (1 pers.)
Lift capacity on the extension deck	230 kg
<b>A</b> Platform length - outside	1.72 m
<b>B</b> Platform length - extended	2.59 m
Length - extension	0.86 m
<b>C</b> Platform width - outside	0.74 m
<b>D</b> Height - stowed	1.98 m
<b>F</b> Overall width	0.79 m
<b>G</b> Length	1.9 m
<b>H</b> Wheelbase	1.38 m
<b>I</b> Ground clearance - center	8.7 cm
Ground clearance - deployed potholes	2 cm
Drive speed	0.5 - 4.5 km/h
Gradeability	25 %
Tilt	1.5° / 3°
Turning radius - outside	1.5 m
Batteries	24 V - 225 Ah
Hydraulic system capacity	7 l
Weight	1 590 kg

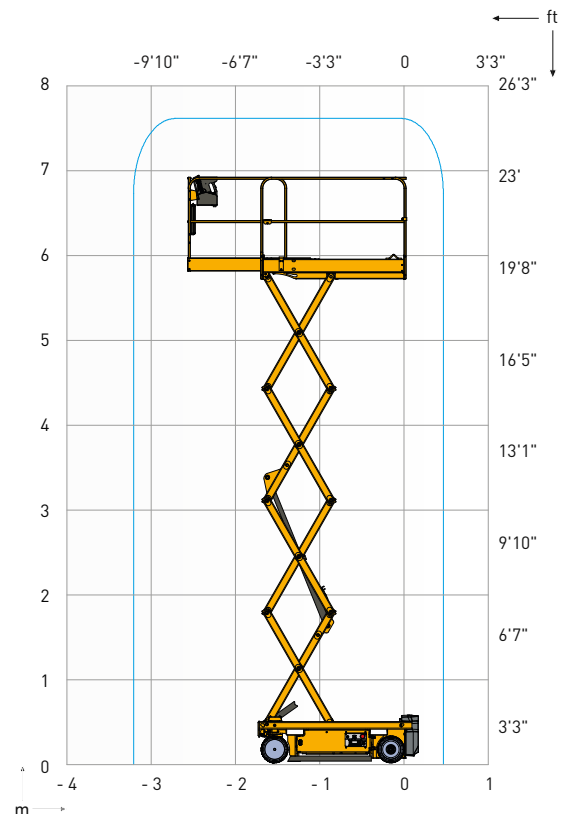


### STANDARD EQUIPMENT

- > Haulotte Activ'Energy Management: Smart CAN charger
- > 24 V electric drive brushless AC motors
- > Battery level indicator on upper and lower control boxes
- > Haulotte Activ'Screen (battery charge, hourmeter, service alert & failures icons in code or in full text...)
- > Pothole guards
- > 2 swing out trays
- > Lateral fork lifting pockets
- > 2 front steering and 2 rear driving wheels
- > Proportional controls
- > Electric or manual break release system
- > Tilt sensor
- > Lifting and stowage points
- > Non marking tyres

### OPTIONS AND ACCESSORIES

- > Haulotte Activ'Energy Management: automatic or manual batteries waterfilling system
- > Folding guardrails
- > AC power to platform
- > Hydraulic oil for cold countries
- > Telematics ready
- > Flashing light (standard in AUS / NZ)
- > Dual flashing lights
- > Working light
- > Panel carrier
- > Pipe cradle





## ENJOY A LONGER LIFESPAN

### BUILT-IN MAINTENANCE CARE PROGRAMS

#### 1. Desulfation cycle

Sulfation can drastically affect battery lifespan. With Haulotte Activ'Energy Management, an on-board desulfation program delivers an ultra slow-charging cycle that regenerates batteries. Optimal lifespan is ensured.

#### 2. Equalization phase

Once in a while, the smart charger automatically launches an overcharging cycle to ensure that all battery cells maintain the same performance.

#### 3. Deep discharges recovery cycle

After a deep discharge, most machines can't be powered on. Haulotte Activ'Energy Management integrates hardware that delivers a very low voltage to preserve and recover a deeply discharged battery, improving the uptime of your machine.



### PREVENTIVE MAINTENANCE NOTIFICATIONS

Periodically, batteries need a complete charge. Notifications on the Haulotte Activ'Screen alert the operator or technician when to perform it and when they can unplug the machine.





SMART  
CHARGER

## IMPROVE BATTERY PERFORMANCE



### CIRCUIT BREAKER AUTO REBOOT

An unstable power supply may activate the circuit breaker, stopping the charging process. As a result, the operator may find the machine with a low battery level at start of shift. With Haulotte Activ'Energy Management, the charger will automatically reboot as soon as the power supply is stabilized, ensuring a complete battery charge.

### TAILORED CHARGING CURVE

The smart charger monitors various charging parameters and adapts the charging curve according to battery manufacturer's recommendations. Charging time and battery capacity remain optimal over time.



Volt



Ampere



°C

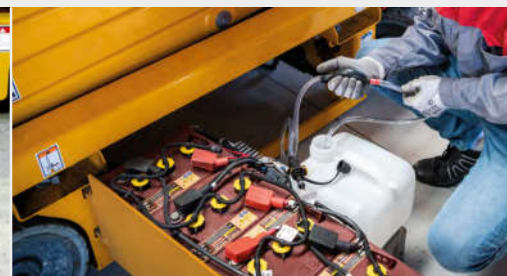
**3 OFFER  
LEVELS**

# OUR SOLUTIONS ADAPT TO YOUR NEEDS

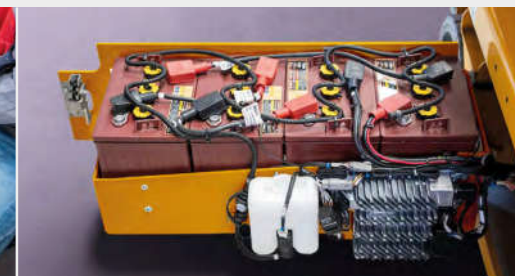
**Haulotte**   
**ACTIV' ENERGY**  
MANAGEMENT



**1 • SMART CHARGER**



**2 • EASY MAINTENANCE PACK\***



**3 • AUTO MAINTENANCE PACK\***

**Smart can bus charger:**

- > Built-in maintenance care programs
- > Preventive maintenance notifications
- > Tailored charging curve
- > Circuit breaker auto reboot

**Centralized waterfilling**

**Battery water level sensor**

**Water tank level sensor**



-

-

-



✓ Manual



-



✓ Automatic



\*Suitable for open lead-acid-batteries.

## OPTIMIZE YOUR TOTAL COST OF OWNERSHIP



Your battery **lifespan**  
up to **twice as long!**



Your battery  
**performance improved.**



Your **maintenance costs**  
**significantly reduced.**

**HAULOTTE GROUP** · La Péronnière - BP 9 - 42152 l'Horme - France  
**Tel:** +33 (0)4 77 29 24 24 · **Fax:** +33 (0)4 77 29 43 95  
**haulotte@haulotte.com** · **www.haulotte.com**

**Haulotte**   
**LET'S DARE TOGETHER**